

#### NOTES:

1. INSTALLATION SHALL COMPLY WITH ALL APPLICABLE NATIONAL, STATE AND LOCAL CODES.
2. REFER TO PRODUCT DOCUMENTATION FOR ADDITIONAL DETAILS PRIOR TO INSTALLATION AND SITE PREPARATION WORK.
3. ALL DIMENSIONS ARE IN MILLIMETERS.
- △4. CLEARANCE DIMENSIONS ARE RECOMMENDED FOR AIRFLOW AND SERVICE ACCESS ONLY. CONSULT WITH LOCAL SAFETY CODES AND STANDARDS FOR ADDITIONAL REQUIREMENTS IN YOUR AREA.
5. CABLE ENTRY IS FROM BOTTOM/BOTTOM-REAR/BOTTOM-SIDES OF THE UNIT.
6. OPERATING TEMPERATURE: 0°C TO 40°C [32°F TO 104°F].
7. PROTECTION CLASS: IP31.
8. COLOR: RAL 7035.
- △9. FOR HEAT DISSIPATION, WEIGHT DATA AND CENTER OF GRAVITY DETAILS REFER TO SHEET-2.

THIS DRAWING AND SPECIFICATIONS HEREIN ARE THE PROPERTY OF SCHNEIDER ELECTRIC AND SHALL NOT BE COPIED, REPRODUCED OR USED IN WHOLE OR IN PART, AS THE BASIS FOR THE MANUFACTURE OR SALE OF ITEMS WITHOUT WRITTEN PERMISSION FROM SCHNEIDER ELECTRIC. THIS DRAWING IS BASED UPON LATEST AVAILABLE INFORMATION AND IS SUBJECT TO CHANGE WITHOUT NOTICE.

**Schneider Electric**

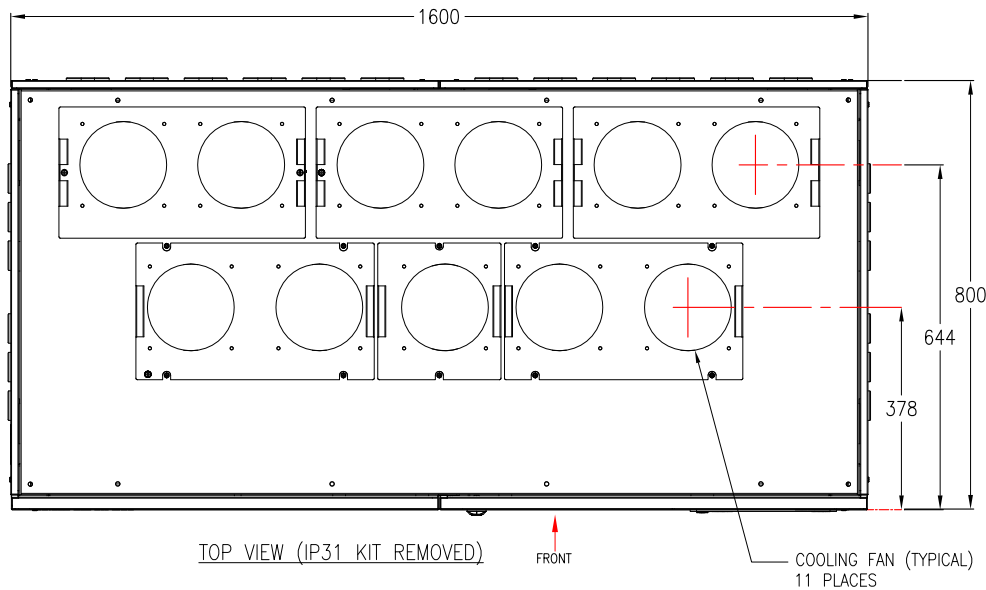
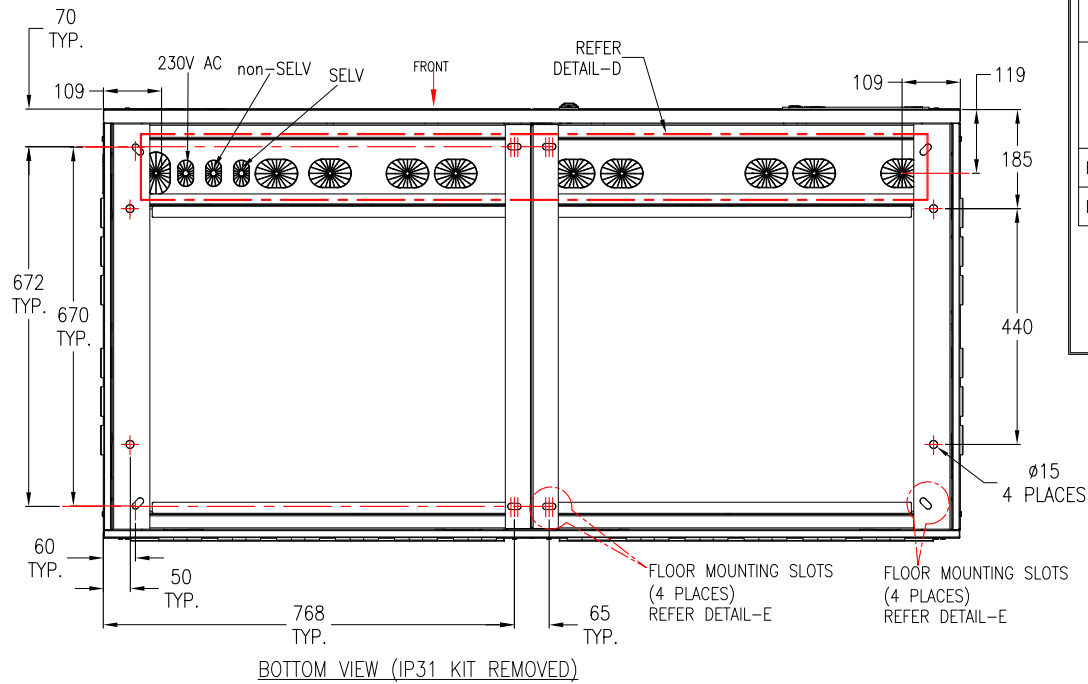
**TITLE:** Galaxy PW 2nd Gen  
UPS 100/120kVA  
Input: 380/400/415V, 3PH, 50Hz, SINGLE/DUAL MAINS  
Output: 220/230/240V, 1PH, 50Hz  
**GENERAL ARRANGEMENT**

**PROJECT:** SUBMITTAL DRAWINGS **SHEET 1 OF 7**

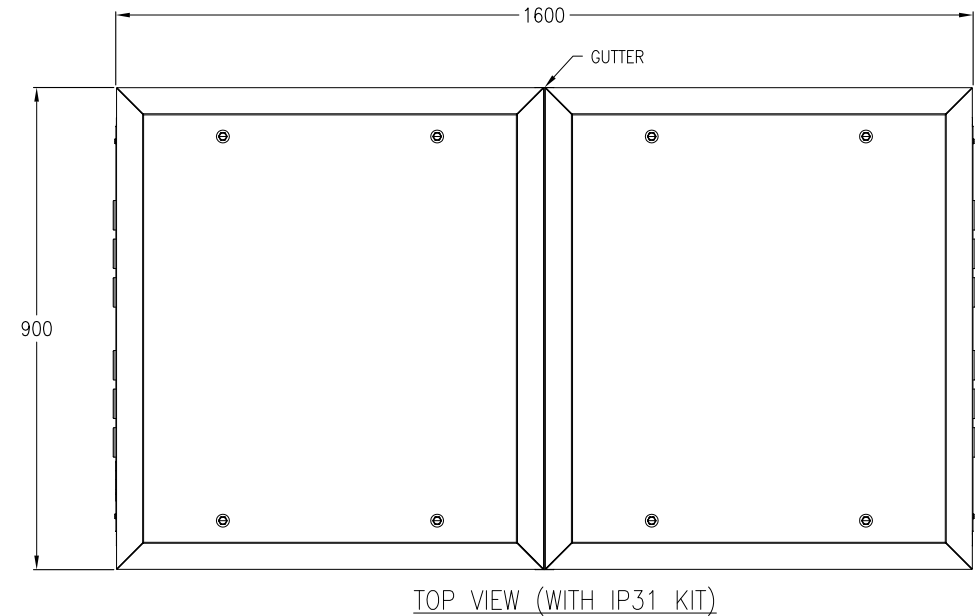
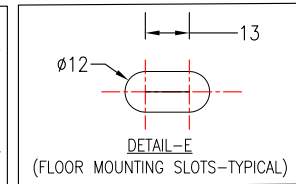
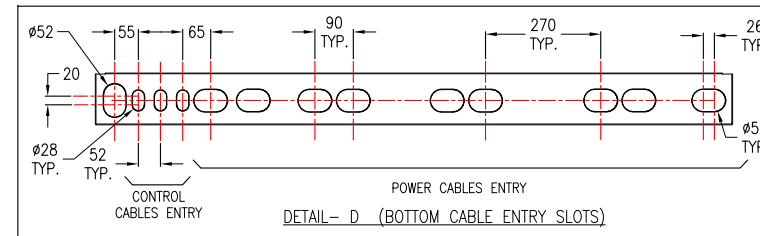
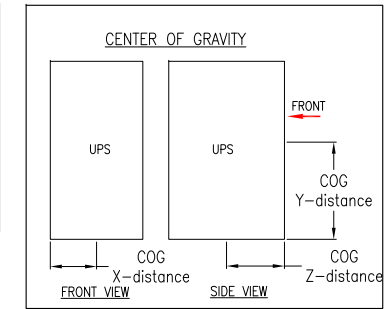
**DWG NO:** EPWUPS100K120U12PTS

<b>DRAWN:</b> BALA	13-SEP-20
<b>ENGINEER:</b> XIANG REN	18-SEP-20
<b>APPROVED:</b> XIANG REN	18-SEP-20

**REV:** 0  
**FIRST ANGLE PROJECTION**



CENTER OF GRAVITY AND WEIGHT DATA $\triangle 5$					HEAT DISSIPATION (W)		
UPS SKU NUMBER	RATING (kVA)	CENTER OF GRAVITY DISTANCE IN MILLIMETERS			WEIGHT (kg)	NORMAL OPERATION	BATTERY OPERATION
		X	Y	Z			
EPWUPS100KU12PTS	100	758	408	678	1239	11760	1580
EPWUPS120KU12PTS	120	765	410	673	1338	13820	1760
						2180	2300



#### NOTES:

1. INSTALLATION SHALL COMPLY WITH ALL APPLICABLE NATIONAL, STATE AND LOCAL CODES.
2. REFER TO PRODUCT DOCUMENTATION FOR ADDITIONAL DETAILS PRIOR TO INSTALLATION AND SITE PREPARATION WORK.
3. ALL DIMENSIONS ARE IN MILLIMETERS.
4. SOME STRUCTURAL DETAILS HAVE BEEN OMITTED FOR THE PURPOSE OF CLARITY.

$\triangle 5$ . THIS INFORMATION PROVIDES APPROXIMATE CENTER OF GRAVITY CALCULATION.

THIS DRAWING AND SPECIFICATIONS HEREIN ARE THE PROPERTY OF SCHNEIDER ELECTRIC AND SHALL NOT BE COPIED, REPRODUCED OR USED IN WHOLE OR IN PART, AS THE BASIS FOR THE MANUFACTURE OR SALE OF ITEMS WITHOUT WRITTEN PERMISSION FROM SCHNEIDER ELECTRIC. THIS DRAWING IS BASED UPON LATEST AVAILABLE INFORMATION AND IS SUBJECT TO CHANGE WITHOUT NOTICE.

**Schneider Electric**

TITLE: Galaxy PW 2nd Gen  
UPS 100/120kVA  
Input: 380/400/415V, 3PH, 50Hz, SINGLE/DUAL MAINS  
Output: 220/230/240V, 1PH, 50Hz  
TOP AND BOTTOM VIEWS

PROJECT: SUBMITTAL DRAWINGS SHEET 2 OF 7

DWG NO: EPWUPS100K120U12PTS

DRAWN: BALA 13-SEP-20

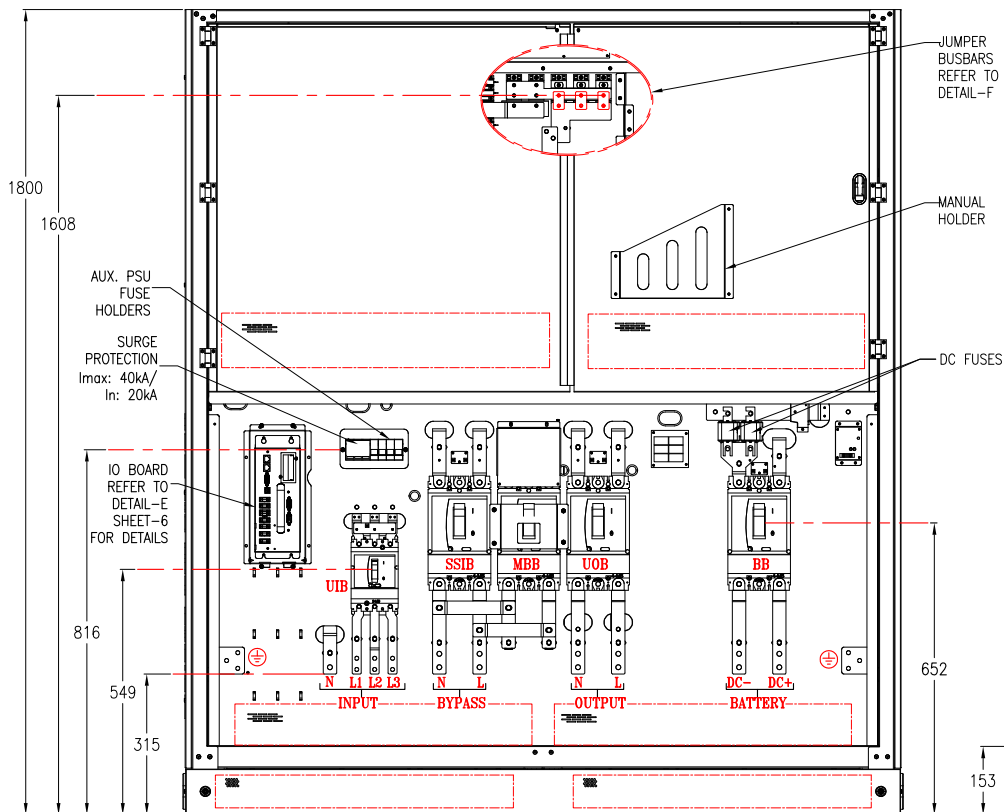
ENGINEER: XIANG REN 18-SEP-20

APPROVED: XIANG REN 18-SEP-20

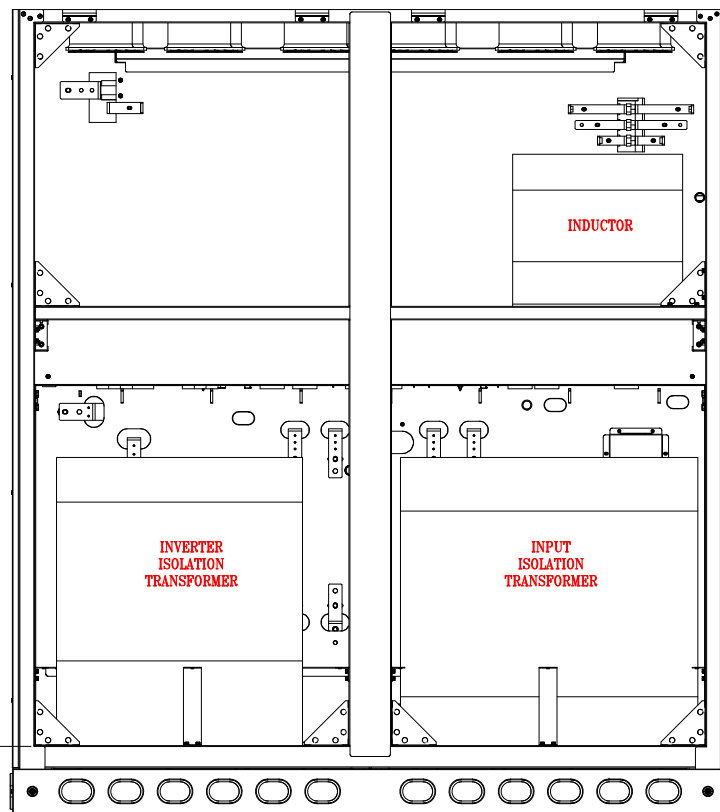
REV. 0

FIRST ANGLE

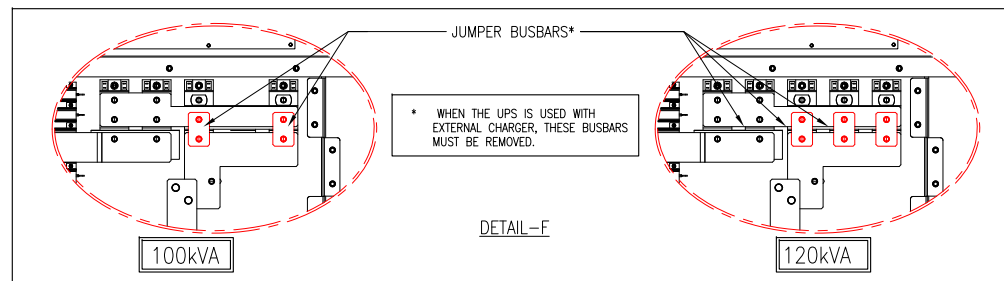
PROJECTION



INTERNAL FRONT VIEW



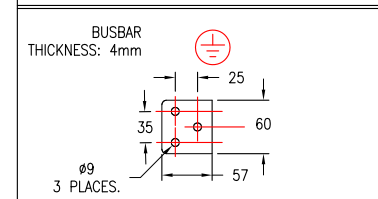
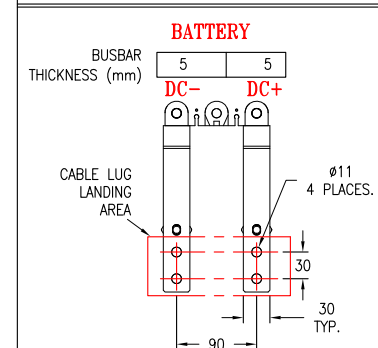
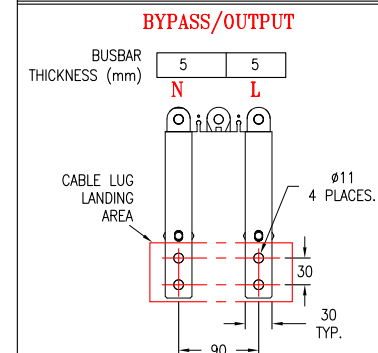
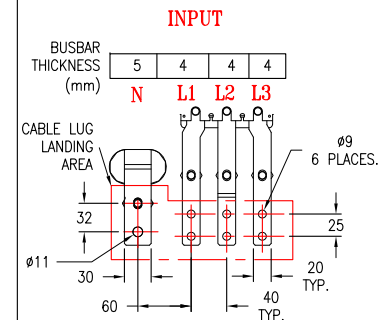
INTERNAL REAR VIEW



DETAIL-F

TRANSFORMER DETAILS (DRY TYPE)		
UPS SKU NUMBER	INPUT ISOLATION TRANSFORMER DETAILS	OUTPUT ISOLATION TRANSFORMER DETAILS
EPWUPS100KU12PTS	100kVA, 50Hz, Vin: 380 VAC, Vout: 245/245, Dd0y11	100kVA, 50Hz, Vin: 96 VAC, Vout: 220 VAC, li0
EPWUPS120KU12PTS	120kVA, 50Hz, VIN: 380 VAC, Vout: 245/245, Dd0y11	120kVA, 50Hz, Vin: 96 VAC, Vout: 220 VAC, li0

## INTERFACE BUSBARS



### NOTES:

1. INSTALLATION SHALL COMPLY WITH ALL APPLICABLE NATIONAL, STATE AND LOCAL CODES.
2. REFER TO PRODUCT DOCUMENTATION FOR ADDITIONAL DETAILS PRIOR TO INSTALLATION AND SITE PREPARATION WORK.
3. ALL DIMENSIONS ARE IN MILLIMETERS.
4. SOME STRUCTURAL DETAILS HAVE BEEN OMITTED FOR THE PURPOSE OF CLARITY.

THIS DRAWING AND SPECIFICATIONS HEREIN ARE THE PROPERTY OF SCHNEIDER ELECTRIC AND SHALL NOT BE COPIED, REPRODUCED OR USED IN WHOLE OR IN PART, AS THE BASIS FOR THE MANUFACTURE OR SALE OF ITEMS WITHOUT WRITTEN PERMISSION FROM SCHNEIDER ELECTRIC. THIS DRAWING IS BASED UPON LATEST AVAILABLE INFORMATION AND IS SUBJECT TO CHANGE WITHOUT NOTICE.

**Schneider Electric**

TITLE: Galaxy PW 2nd Gen  
UPS 100/120kVA  
Input: 380/400/415V, 3PH, 50Hz, SINGLE/DUAL MAINS  
Output: 220/230/240V, 1PH, 50Hz  
INTERNAL VIEWS AND BUSBAR DETAILS

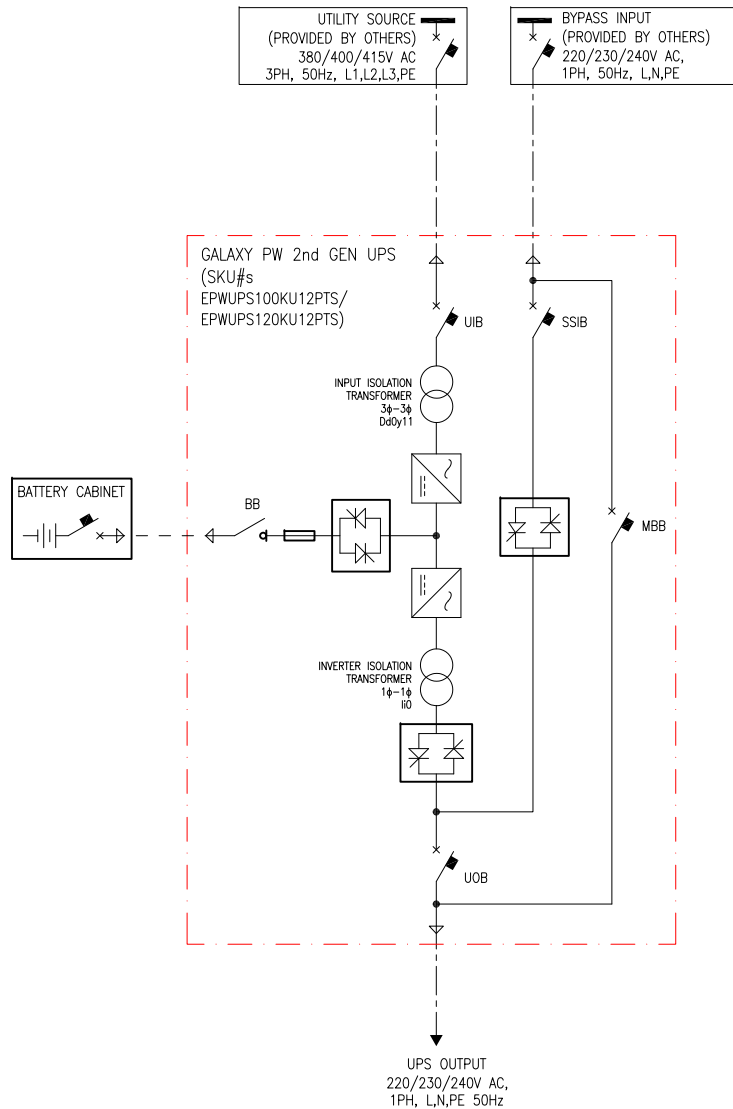
PROJECT: SUBMITTAL DRAWINGS SHEET 3 OF 7

DWG NO: EPWUPS100K120U12PTS

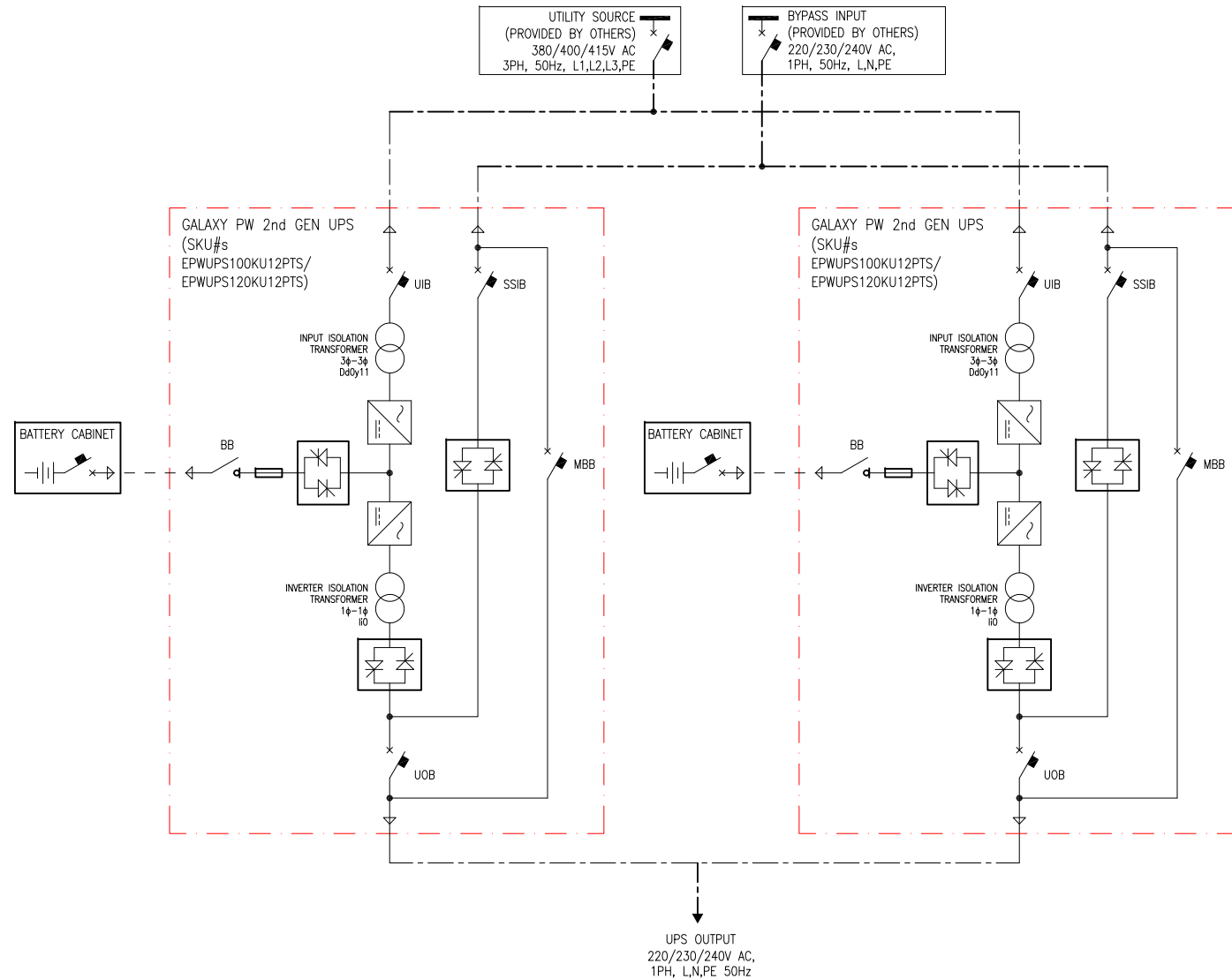
DRAWN: BALA	13-SEP-20
ENGINEER: XIANG REN	18-SEP-20
APPROVED: XIANG REN	18-SEP-20

REV. 0  
FIRST ANGLE PROJECTION

## 1 MODULE UPS SOLUTION



## 1+1 REDUNDANT PARALLEL UPS SOLUTION



### NOTES:

1. INSTALLATION SHALL COMPLY WITH ALL APPLICABLE NATIONAL, STATE AND LOCAL CODES.
2. REFER TO PRODUCT INSTALLATION DOCUMENTATION FOR SITE PREPARATIONS.
3. DRAWING DEPICTS POWER SYSTEM CONNECTIONS AND IS NOT REPRESENTATIVE OF PHYSICAL LAYOUT. REFER TO MECHANICAL DRAWINGS FOR EQUIPMENT LAYOUT.
4. FINAL SELECTIONS ARE RESPONSIBILITY OF ENGINEER OF RECORDS BASED ON INSTALLED CONDITIONS AND SCC/SELECTIVE CO-ORDINATION/ARC-FLASH ANALYSIS.
5. MAXIMUM 4 UPSs (4 CAPACITY OR 3(N+1)) CAN BE PARALLELED.

THIS DRAWING AND SPECIFICATIONS HEREIN ARE THE PROPERTY OF SCHNEIDER ELECTRIC AND SHALL NOT BE COPIED, REPRODUCED OR USED IN WHOLE OR IN PART, AS THE BASIS FOR THE MANUFACTURE OR SALE OF ITEMS WITHOUT WRITTEN PERMISSION FROM SCHNEIDER ELECTRIC. THIS DRAWING IS BASED UPON LATEST AVAILABLE INFORMATION AND IS SUBJECT TO CHANGE WITHOUT NOTICE.

**Schneider Electric**

TITLE: Galaxy PW 2nd Gen  
UPS 100/120kVA  
Input: 380/400/415V, 3PH, 50Hz, DUAL MAINS  
Output: 220/230/240V, 1PH, 50Hz  
SYSTEM ONE LINE DIAGRAM

PROJECT: SUBMITTAL DRAWINGS SHEET 4 OF 7

LEGEND:	
---	AC CABLE (PROVIDED BY OTHERS)
---	500VDC CABLE (PROVIDED BY OTHERS)
UIB --	UNIT INPUT BREAKER
SSIB---	STATIC SWITCH INPUT BREAKER
BB-----	BATTERY BREAKER
MBB---	MAINTENANCE BYPASS BREAKER
UOB---	UNIT OUTPUT BREAKER

DWG NO:	EPWUPS100K120U12PTS	REV.	1
DRAWN:	BALA	25-MAR-21	ANGLE OF PROJECTION
ENGINEER:	XIANG REN	9-APR-21	N.A
APPROVED:	XIANG REN	9-APR-21	

GALAXY PW 2ND GENERATION 100/120 kVA 1 MODULE UPS SITE PLANNING DATA									
MAINS INPUT (SINGLE MAINS): 380/400/415V AC, 50Hz 3PH L1,L2,L3,PE					BYPASS INPUT: 220/230/240V AC, 50Hz, 1PH, L1,N,PE				
OUTPUT: 220/230/240V AC, 50Hz, 1PH L1,N,PE									
UPS RATING (kVA)	UPS SKU NUMBER	NOMINAL MAINS INPUT CURRENT (A) Ⓢ380/400/ 415V AC	MAXIMUM MAINS INPUT CURRENT (A) Ⓢ380/400/ 415V AC	NOMINAL BYPASS INPUT CURRENT (A) Ⓢ220/230/ 240V AC	UPS/ SYSTEM OUTPUT CURRENT Ⓢ220/230/ 240V AC	BATTERY CURRENT Ⓢ FULL LOAD AND NOMINAL Vbat (V)	BATTERY CURRENT Ⓢ FULL LOAD AND MINIMUM Vbat (V)	RECOMMENDED OVER CURRENT PROTECTION DEVICE MODEL(PART NUMBER)/In/Ir/Im SETTING (MAKE:-SCHNEIDER ELECTRIC)	
									MAINS INPUT
100	EPWUPS100KU12PTS	186/177/171	233/221/213	455/435/417	455/435/417	462	578	NSX250F TM250D 3P3D (LV431630)/ 250/250/5-10xIn	NSX630F Mic2.3 630A 3P3D (LV432876)/ Io=500/Ir=0.95/Isd=10
120	EPWUPS120KU12PTS	243/231/223	304/289/278	545/522/500	545/522/500	556	692	NSX400F Mic2.3 400A 3P3D (LV432676)/ Io=360/Ir=0.95/Isd=10	NSX630F Mic2.3 630A 3P3D (LV432876)/ Io=570/Ir=0.98/Isd=10

GALAXY PW 2ND GENERATION 100/120 kVA RECOMMENDED CABLE SIZES**							
UPS RATING (kVA)	UPS SKU NUMBER	AC CABLES (IN SQMM)				DC CABLES (IN SQMM)	
		INPUT PHASES	INPUT PE	BYPASS/ OUTPUT PHASES	BYPASS/ OUTPUT PE	DC+/DC-	DC PE
100	EPWUPS100KU12PTS	50	25	2x70	70	2x95	95
120	EPWUPS120KU12PTS	70	35	2x95	95	2x95	95

- \*\* CABLE SIZES ARE BASED ON TABLE B.52.12 OF IEC 60364-5-52 WITH THE FOLLOWING ASSERTIONS:-**
- a) 90° C CONDUCTORS, AN AMBIENT TEMPERATURE OF 30° c.
  - b) USE OF COPPER CONDUCTORS, INSTALLATION METHOD F.
  - c) PE CABLE SIZE BASED ON TABLE 54.2 OF IEC 60364-4-54.
  - d) IF THE AMBIENT TEMPERATURE IS GREATER THAN 30° C,  
LARGER CONDUCTORS ARE TO BE SELECTED IN ACCORDANCE WITH THE CORRECTION FACTORS OF THE IEC.

**NOTES:**

- 1. INSTALLATION SHALL COMPLY WITH ALL APPLICABLE NATIONAL, STATE AND LOCAL CODES.
- 2. REFER TO PRODUCT INSTALLATION DOCUMENTATION FOR SITE PREPARATIONS.
- 3. DRAWING DEPICTS POWER SYSTEM CONNECTIONS AND IS NOT REPRESENTATIVE OF PHYSICAL LAYOUT.  
REFER TO MECHANICAL DRAWINGS FOR EQUIPMENT LAYOUT.
- 4. FINAL SELECTIONS ARE RESPONSIBILITY OF ENGINEER OF RECORDS BASED ON INSTALLED  
CONDITIONS AND SCC/SELECTIVE CO-ORDINATION/ARC-FLASH ANALYSIS.

THIS DRAWING AND SPECIFICATIONS HEREIN ARE THE PROPERTY OF SCHNEIDER ELECTRIC AND SHALL NOT BE COPIED, REPRODUCED OR USED IN WHOLE OR IN PART, AS THE BASIS FOR THE MANUFACTURE OR SALE OF ITEMS WITHOUT WRITTEN PERMISSION FROM SCHNEIDER ELECTRIC. THIS DRAWING IS BASED UPON LATEST AVAILABLE INFORMATION AND IS SUBJECT TO CHANGE WITHOUT NOTICE.



TITLE: Galaxy PW 2nd Gen  
UPS 100/120kVA  
Input: 380/400/415V, 3PH, 50Hz, DUAL MAINS  
Output: 220/230/240V, 1PH, 50Hz  
SITE PLANNING DATA

DWG NO: EPWUPS100K120U12PTS

REV. 1

DRAWN: BALA 08-NOV-20

ANGLE OF PROJECTION

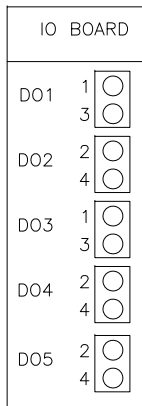
ENGINEER: XIANG REN 08-NOV-20

N.A

PROJECT: SUBMITTAL DRAWINGS SHEET 5 OF 7

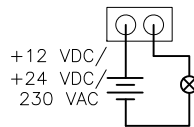
APPROVED: XIANG REN 08-NOV-20

# CONFIGURABLE OUTPUT DRY CONTACTS

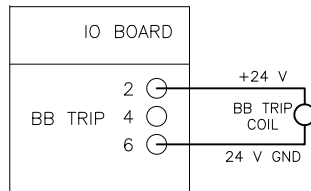


D01, D02, D03,  
D04, 05  
CONFIGURABLE  
FUNCTIONS  
(DEFAULT 0, 0, 0, 0, 0)

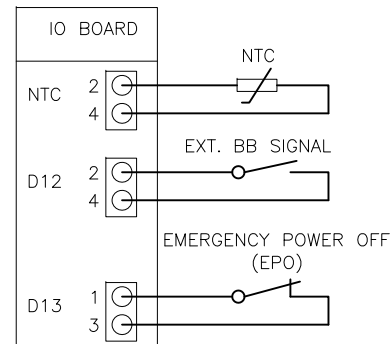
0: OFF  
1: COMMON ALARM  
2: NORMAL OPERATION  
3: BATTERY OPERATION  
4: STATIC BYPASS  
5: OUTPUT OVERLOAD  
6: FAN INOPERABLE  
7: BATTERY FAULT  
8: BATTERY DISCONNECTED  
9: BATTERY VOLTAGE LOW  
10: INPUT OUT OF TOLERANCE  
11: BYPASS OUT OF TOLERANCE  
12: EPO ACTIVATED  
13: MAINTENANCE MODE  
14: BACKFEED ON INPUT  
15: BACKFEED ON BYPASS



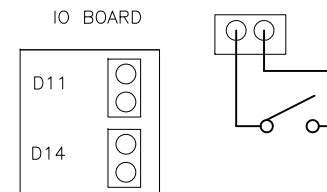
# FIXED OUTPUT DRY CONTACTS



# FIXED INPUT DRY CONTACTS



# CONFIGURABLE INPUT DRY CONTACTS



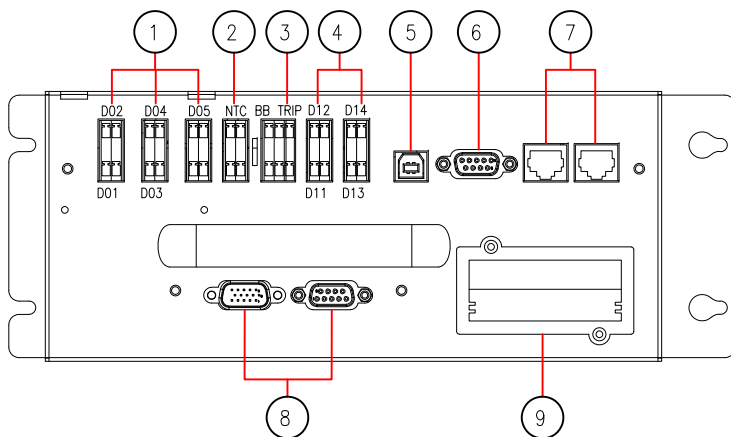
D11, D14 (DEFAULT 0, 0)  
CONFIGURABLE FUNCTIONS

0: OFF  
1: UPS ON  
2: UPS OFF  
3: BATTERY FAULT  
4: GENSET ENABLE  
5: CUSTOM ALARM 1  
6: CUSTOM ALARM 2  
7: DISABLE ECO  
8: FORCE INVERTER OFF

# SPECIFICATIONS OF INPUT AND OUTPUT RELAYS

TYPE OF CONTACT	PARAMETER	TYPICAL	MAXIMUM
INPUT	VOLTAGE (V)	NA	5
	CURRENT (mA)	NA	15
OUTPUT	VOLTAGE (V)	24 VDC	230 VAC
	CURRENT (A)	NA	3

△ A. MAXIMUM 5A/250 VAX, 3 A/30 VDC MUST BE CONNECTED TO THE OUTPUT CONTACTS. THE RECOMMENDED CABLE IS 0.5–1 Sqmm. THE OUTPUT DRY CONTACTS PROVIDE TWO PASSIVE STATUSES: SHORT AND OPEN. THE OUTPUT CONTACTS MUST BE CONNECTED TO AN EXTERNAL POWER SUPPLY TO TRIGGER THE FUNCTION.



DETAIL-E (ROTATED/ENLARGED) (IO BOARD)

- OUTPUT DRY CONTACTS (230 VAC)
- EXTERNAL BATTERY TEMPERATURE INPUT CONTACT (NON-SELV)
- BB TRIP OUTPUT CONTACT (SELV)
- INPUT DRY CONTACTS (SELV)
- USB PORT (SELV)
- RS232 PORTS (SELV)
- RS485 PORTS (SELV)
- PARALLEL PORTS (SELV)
- INTELLIGENT SLOT FOR SNMP CARD (SELV)

## COMMON NOTES:

- INSTALLATION SHALL COMPLY WITH ALL APPLICABLE NATIONAL, STATE AND LOCAL CODES.
- REFER TO PRODUCT INSTALLATION DOCUMENTATION FOR SITE PREPARATIONS.
- RUN THE SELV CABLES SEPARATELY FROM THE non-SELV CABLES.

THIS DRAWING AND SPECIFICATIONS HEREIN ARE THE PROPERTY OF SCHNEIDER ELECTRIC AND SHALL NOT BE COPIED, REPRODUCED OR USED IN WHOLE OR IN PART, AS THE BASIS FOR THE MANUFACTURE OR SALE OF ITEMS WITHOUT WRITTEN PERMISSION FROM SCHNEIDER ELECTRIC. THIS DRAWING IS BASED UPON LATEST AVAILABLE INFORMATION AND IS SUBJECT TO CHANGE WITHOUT NOTICE.

**Schneider Electric**

TITLE: Galaxy PW 2nd Gen  
UPS 100/120kVA  
Input: 380/400/415V, 3PH, 50Hz, DUAL MAINS  
Output: 220/230/240V, 1PH, 50Hz  
UPS INTERFACE DETAILS-1

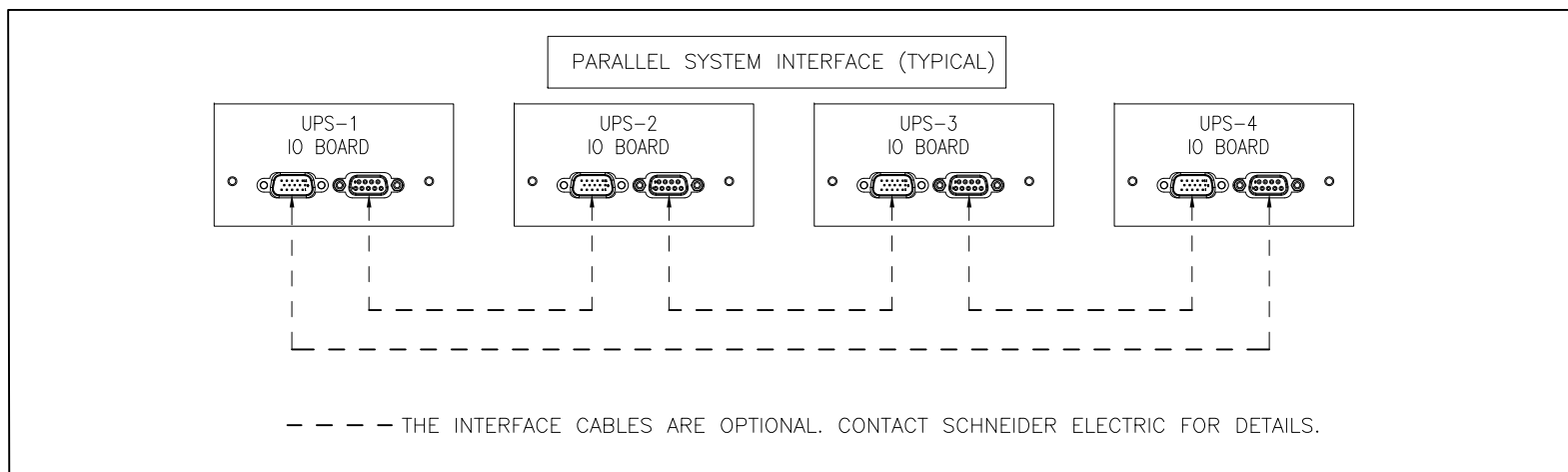
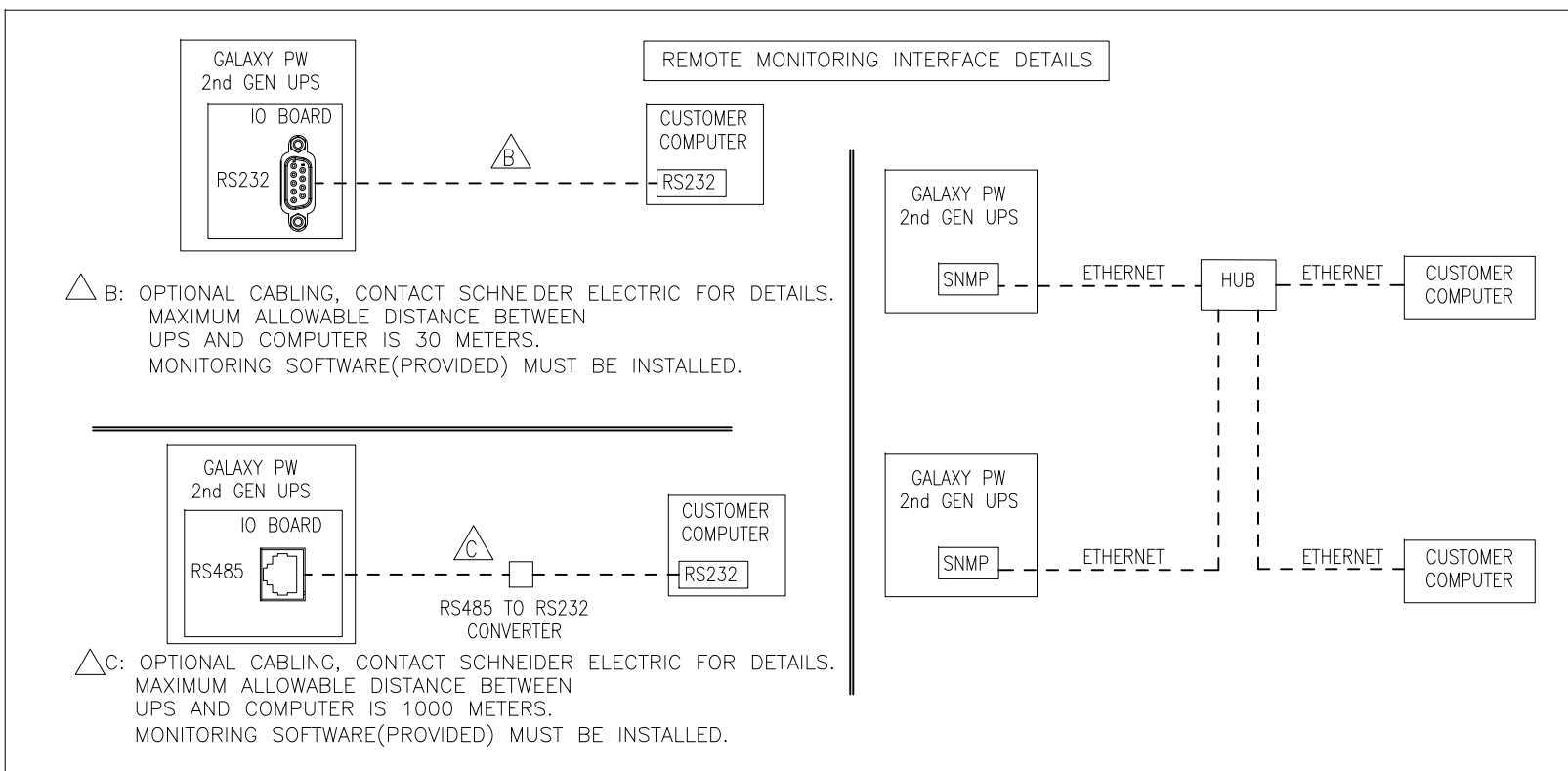
DWG NO: EPWUPS100K120U12PTS

REV. 1

PROJECT: SUBMITTAL DRAWINGS SHEET 6 OF 7

DRAWN: BALA 25-MAR-21  
ENGINEER: XIANG REN 9-APR-21  
APPROVED: XIANG REN 9-APR-21

ANGLE OF PROJECTION  
N.A.



#### COMMON NOTES:

1. INSTALLATION SHALL COMPLY WITH ALL APPLICABLE NATIONAL, STATE AND LOCAL CODES.
2. REFER TO PRODUCT INSTALLATION DOCUMENTATION FOR SITE PREPARATIONS.
3. RUN THE SELV CABLES SEPARATELY FROM THE non-SELV CABLES.

THIS DRAWING AND SPECIFICATIONS HEREIN ARE THE PROPERTY OF SCHNEIDER ELECTRIC AND SHALL NOT BE COPIED, REPRODUCED OR USED IN WHOLE OR IN PART, AS THE BASIS FOR THE MANUFACTURE OR SALE OF ITEMS WITHOUT WRITTEN PERMISSION FROM SCHNEIDER ELECTRIC. THIS DRAWING IS BASED UPON LATEST AVAILABLE INFORMATION AND IS SUBJECT TO CHANGE WITHOUT NOTICE.

**Schneider Electric**

TITLE: Galaxy PW 2nd Gen  
UPS 100/120kVA  
Input: 380/400/415V, 3PH, 50Hz, DUAL MAINS  
Output: 220/230/240V, 1PH, 50Hz  
UPS INTERFACE DETAILS-2

PROJECT: SUBMITTAL DRAWINGS SHEET 7 OF 7

DWG NO: EPWUPS100K120U12PTS

DRAWN:	BALA	13-SEP-20
ENGINEER:	XIANG REN	18-SEP-20
APPROVED:	XIANG REN	18-SEP-20

REV. 0  
ANGLE OF PROJECTION  
N.A.